

New Castle County Police
presents:

Burglary Prevention Seminar – *Protect your Home*



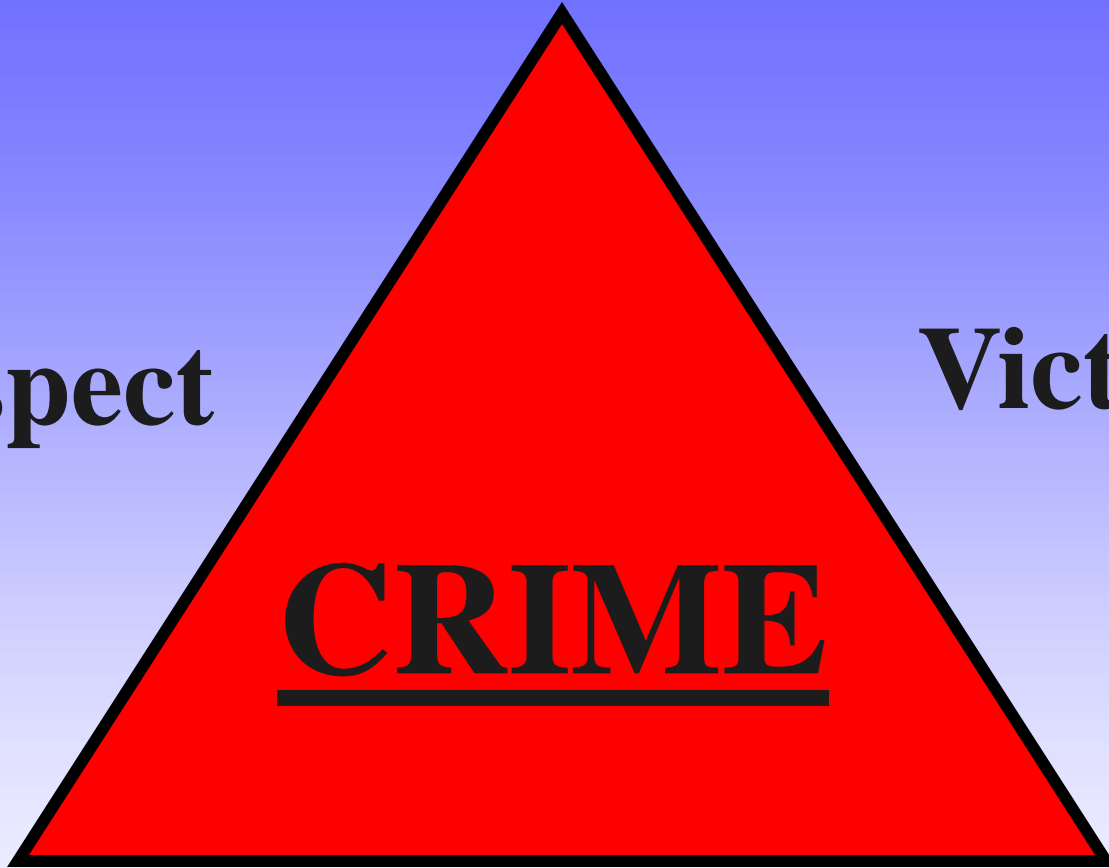
New Castle County Police – Community Services Unit
(302) 395-8050

Suspect

Victim

CRIME

Opportunity



CONDUCT YOUR OWN THREAT ASSESSMENT

I. DISRUPT THE PLANNING STAGE –

Avoid predictability & simulate occupancy

- Rotate how/where vehicles are parked
- Alternate your route to and from your home
- If possible, alter times of departure and arrival
- Employ the use of light timer and motion sensor lighting
- Devise the illusion of occupancy



II. EXTERIOR OF HOME :

- Alternate lighting – use timers, audible items within home such as T.V. or talk radio
- Remove any items that could aid a burglar – i.e. ladder, tools, hidden key, unlocked car with garage opener, loose bricks/rocks
- Remove evidence of alluring items – large boxes at the curb from a newly purchased big screen T.V.
- Turn lights on at night and encourage neighbors to do the same

EXTERIOR OF HOME :

- Prominently display house number in plain view (not name)
- Install motion sensor lighting (with timing options) at all entrances including sheds and sliding glass doors.
- Trim back overgrown landscaping; especially in front of entrances and windows
- Install a monitored alarm system with response option & post sign in yard



EXTERIOR OF HOME :

- Do not leave revealing information on your answering machine/voicemail or social networks – such as family members names, or that no one is at home, vacation plans, etc.
- Do not leave garage doors ajar when not in use
- Install a Peep Hole
- Install basement window bar locks
- Install sliding door bolt lock or arm bar locks



EXTERIOR OF HOME :

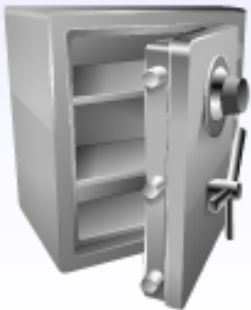


- Consider a large dog as a family pet
- Simulate deterrents: large size men's work boots on front porch, alarm sign in yard, 'beware of dog'
- Draw window tapestries or blinds closed after dark
- Don't allow newspapers, mail, lawn debris or other clutter to accumulate
- Consider a house sitter or attentive neighbor to watch over your home when vacationing away



II. INTERIOR OF HOME :

- Lock windows and doors (42% victims)!
- Engrave valuables
- ****Record Serial Numbers****
- Photograph valuables, esp. jewelry
- Consider a safety deposit box
- Bolt fireproof home safe to wall and floor
- Lock ALL guns!
- Do not open door to any unexpected visitors



INTERIOR OF YOUR HOME

- All exterior doors should be solid wood or metal
- All deadbolts should have a minimum of a 1” throw
- Purchase strike plate reinforcements – relatively inexpensive and easy to install
- Keep cell phone charging nearby (bedside)
- Store your purse, wallet & car keys next to bedside as well – a remote car alarm could be activated to distract/dissuade a burglar
- Arm security alarm at night and when not home

Police as Ally

Promptly report suspicious persons(s) - define

- Promptly report suspicious vehicle(s) - define
- Promptly report suspicious activity - define
- Promptly report any attempted or actual crime: graffiti, theft, burglary, vandalism
- Communicate with neighbors
- Join or start a neighborhood watch program
- Schedule a Home Security Survey

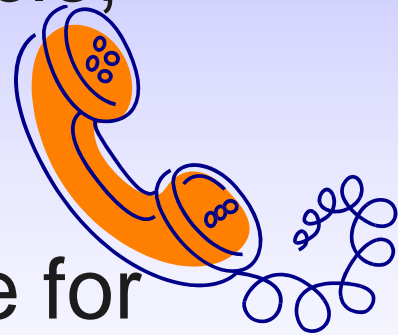
NON-EMERGENCY: 573-2800

EMERGENCY: 9-1-1

Community Services Unit: 395-8050

If you are a burglary victim:

- CALL 9-1-1 immediately
- Do NOT enter the residence to see what property is missing or if intruder is still present
- Note all observations – fleeing vehicle, item left behind
- Leave everything as it was
- Try to stay in one location (preserve for potential K-9 track)



Burglary Victim:

- Divulge any recent occurrences or previous observations
- Provide requested supporting information – serial numbers, time table of crime, etc.
- Allow for processing for latent prints to increase solvability
- Obtain your case number, investigator's name & contact information
- Follow up with investigator about any additional information

What to tell 9-1-1:

*Try to remain as calm as possible
so we can get you help, fast!*

Provide your location 1st (be precise)

- Give your full name, phone number
- Nature of emergency & if you are hurt
- Provide suspect description: ethnicity, build, eyes, hair, clothing, distinguishing features (if it stood out in your mind, it will for police)
- Direction of travel, vehicle description
- **REMAIN ON THE PHONE WITH CALL TAKER
UNTIL POLICE ARRIVE**

Be a good witness

- Take mental notes about suspect
 - Hair, eyes, clothing, height, weight, shoes, etc.
- Ask others to stay
- Don't discuss incident with others prior to speaking to police
- Take written notes if possible
- Follow-up with investigator



What to expect next:

- If you are unhurt, officers may canvass the area prior to meeting you
- Expect multiple officers, repetitive questions
- Other responders – K-9 officer, helicopter, multiple police agencies, detective, evidence specialists
- A lengthy investigation



What to expect:

- Leave things as they were – try to maintain the crime scene
- Expect feelings of anger, guilt, judgment, isolation, vulnerability and a sense of re-victimization while providing details of your burglary
- Request Victim Services: 1-800-VICTIM-1

National Statistics

- Over 72% of all burglaries nationwide are residential
- Over 2 million burglaries reported in 2009
- Residential burglaries – are on the **rise**, both daytime and nighttime
- Rate of stolen property recovered is less than 10% (jewelry 4.7%, firearms 8.8%, electronics 5.1%, office equipment 4.3%, currency 2.8%)

Source: U.S. Dept of Justice – Federal Bureau of Investigation - Crime in the United States, 2009

In the First State – Delaware

- Burglaries in Delaware, consistent with national trends, on the rise (nearly 7,000 in year 2008, rising 9.6% since 2003).
- In nearly 3,000 of those burglaries reported, there was NO forcible entry.
- Clearance rates for Delaware Serious Property Crimes = 22.3%
- Serious property crime constitutes 32% of all crime reported (and nearly half is preventable crime!)
- Gun Burglaries YTD 2010 for New Castle County Police: 43 (as of 11/29/10)

In Your Backyard...

New Castle County Statistics

- Property Crimes comprise 48% of all crime reported to NCCPD
- Burglaries and Thefts have been rising for the past two years
- Nearly 2,000 burglaries reported to NCCPD
- Nearly 2,700 thefts from motor vehicles in first 11 months of 2010.
- For all reported burglaries, 42% dwellings were unsecured, no forced entry required

Report, Report, Report

- If you are a victim
- If you observe suspicious person(s), vehicle(s), activity....better safe than sorry
- Incidents where someone appears in danger or stranded, rather than making yourself vulnerable
- Do not remain in a situation or a location that may threaten your safety. Trust your intuition
- Notify any creditors if a credit card or other potential credit line could be compromised

Methods of Reporting

9-1-1



**Non-emergency:
(302) 573-2800**

Prompt reporting is paramount – police cannot optimally investigate late reported suspicious persons or vehicles or crimes

Thank you for joining us today!

Please pass the word on.
Your safety is our top priority.



New Castle County Police
Community Service Unit
(302) 395-8050